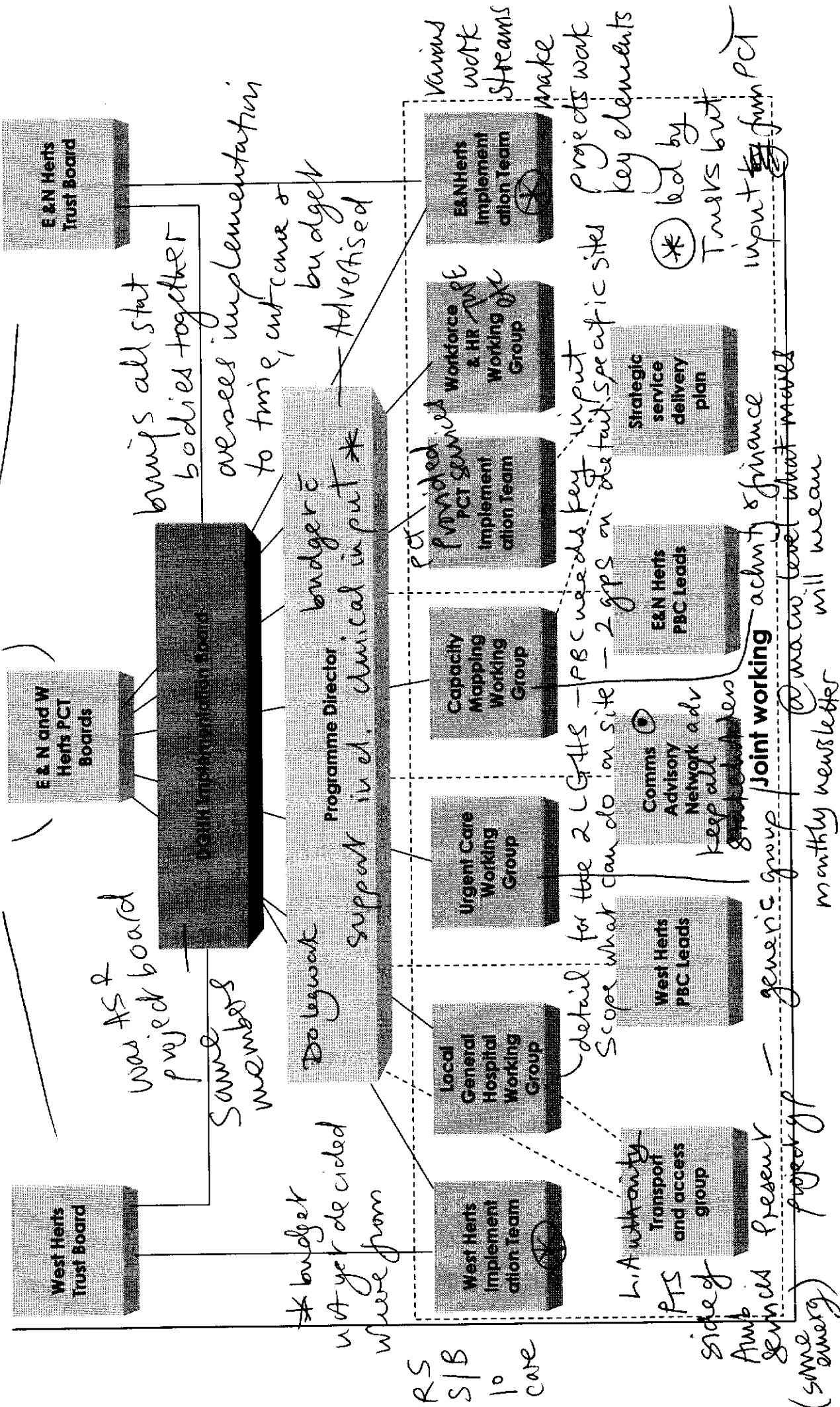


frontline

we help you do things better

© Stakeholder reference group; link to project board

4 Boards
Stat bodies



was AS & board project board
Same members

* budget
with year decided
where from

Do legwork
support incl. clinical input *

bring all stat bodies together
oversees implementation to time, cut cost & budget

Advised

PCT provided PCT services
PBC needs key input - 2 GPs on detail specific sites
Scope what can do on site

keep all good stuff

Joint working activity & finance

generic group

monthly newsletter

will mean

input from PCT

* led by Trusts but

Projects work key elements

Various work streams make

RS
S/B
10
care

side of
Ambulance present project of
(some emergency)